

Magnis

# MS13/MS24

Superior Optics for Enhanced Image  
Flatness and Contrast

Ergonomic Design for Ease of Operation

Long Working Distance of 105 mm

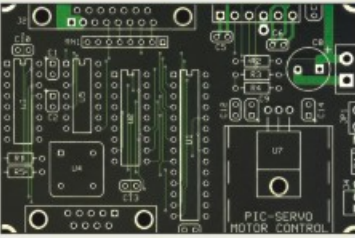
Parfocal Objectives

Smooth Magnification  
Changeover between  
1X/3X or 2X/4X



---

STEREO MICROSCOPES FOR BIOLOGICAL & INDUSTRIAL USE



**Gems - Inspection Accessories**  
Darkfield attachment (with specimen holder) for inspection of  
Gems & Micro samples under transmitted light



**Micro Image Projection System**

# Specifications :

		MS 13		MS 24	
Microscope Body	Objective	1X/3X		2X/4X	
Eye Piece	Working Distance	105mm			
	Diopter Adjustment	+/- (left side)			
	High Eyepoint Super Widefield eyepiece SWH 10X with Field Number 23				
Field of View	Objective	1X	3X	2X	4X
	Visual field (mm)	23	7.7	11.5	5.7
Light Source	Reflected	6V 10W lamp with adjustable brightness			
	Transmitted	5W fluorescent lamp			
Optional Accessories		Fluorescent ring light			
		Eyepiece 15X and 20X			
		MIPS (Micro Image Projection System)			
		Gems inspection accessories			



## MAGNUS ANALYTICS

A-5, Mohan Co-operative Indl. Estate, Mathura Road, New Delhi-110044 India  
Tel.: 91-11-30886764, 30886739, Fax: 91-11-26959382  
E-mail: [exports@magnusanalytics.com](mailto:exports@magnusanalytics.com) Website: [www.magnusanalytics.com](http://www.magnusanalytics.com)



All standard sets are supplied as per specifications which are subject to change without any obligation on the part of the manufacturer.  
Optics are anti-fungus treated & with multi-layer coatings. Accessories shown may not be part of standard equipment.